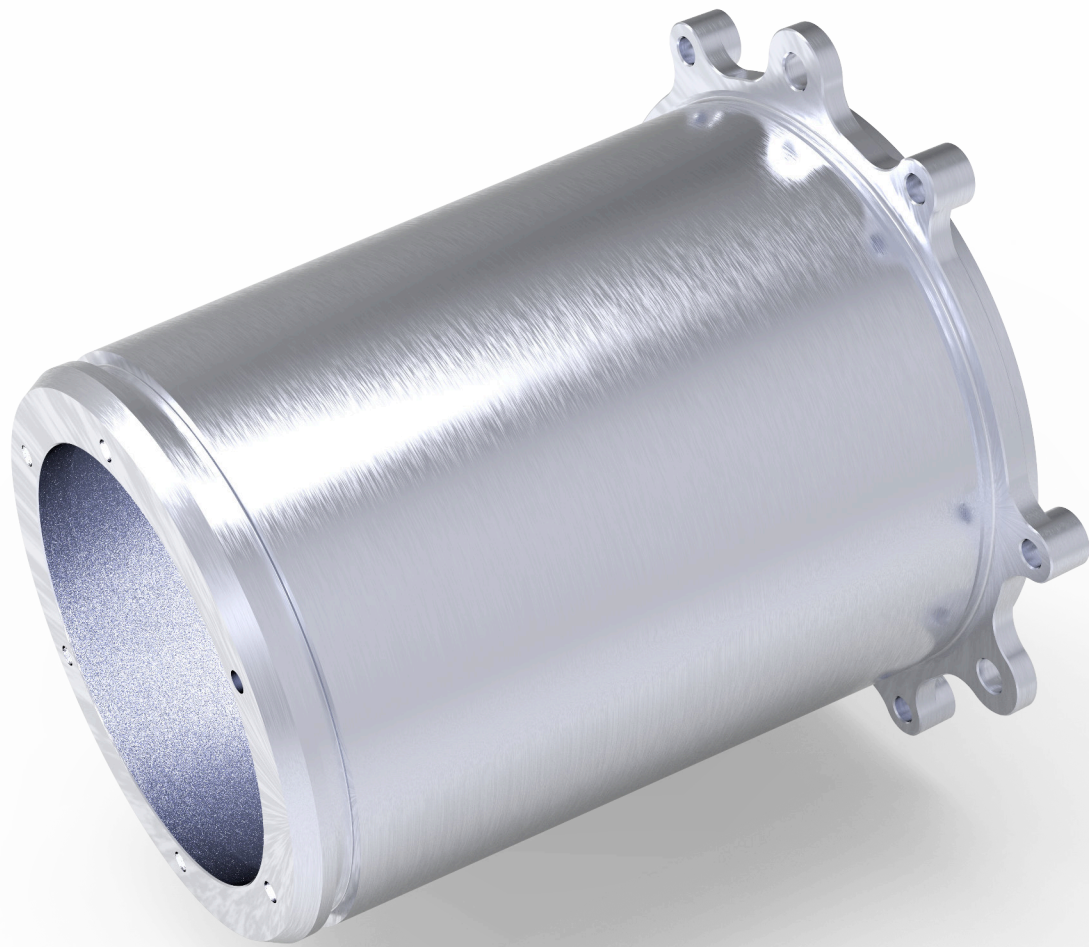




# AMZ News

**MANUFACTURING**



### Main Sponsors

--	--	--	--	--	--	--

### Premium Sponsors


### Sponsors




Demolding of the Chassis took place on March 21<sup>st</sup>

© AMZ

### Manufacturing

After completion of the design phase all of our modules started manufacturing at the beginning of January. For some this consists of discussion and coordination of the proceedings and details of their parts with our partners. While others started laying on their own hands with the manufacturing of various carbon fibre parts. Leading those efforts was the monocoque, alvier's largest and most elaborate single part. In a three-step process a positive epoxy mould was milled first, with which a negative carbon mold was manufactured. Inside of it, the carbon fibre monocoque was laminated layer by layer.

On March 21<sup>st</sup> we were able to complete the earliest demolding of a chassis in AMZ's history. Furthermore, the manufacturing of parts at our various partners needs to be coordinated with great attentiveness to ensure the availability of workpieces on time, to

combat delivery bottlenecks and to deploy minor constructive adjustments if necessary. This is only possible due to close cooperation with our partners. Peculiar precision is especially important when it comes to the manufacturing of our motor parts. Due to a highly restricted assembly space and extensive tolerance chains, size accuracy is paramount. Therefore, we would like to thank RAU AG, Vacuum Schmelze, ANB Boumi and Polygona AG, who are responsible for the manufacturing and processing of our most technically complex motor parts. Without their contribution the production of motors, with an unparalleled power density would not be possible.

### COVID-19 Measurements at AMZ

Due to the extraordinary circumstances we are taking measurements to contain the spread of the COVID-19 virus. We are acting in

accordance with the guidelines of the swiss federal council and ETH Zurich.

All active association members are working from home until further notice. Particular Sub-constructions have been moved into private workshops, where they are assembled and tested. Social Distancing measurements are complied with every step of the way. The assembly of the chassis has been put on halt.

We are very sorry to inform you that the Formula Student events in Germany, Switzerland and the Netherlands have been cancelled for the 2020 season. Even though these circumstances cause a lot of sorrow among our team members, we recognise that the cancellation was the right decision. The officials of the FS East have announced that they will host a virtual event.

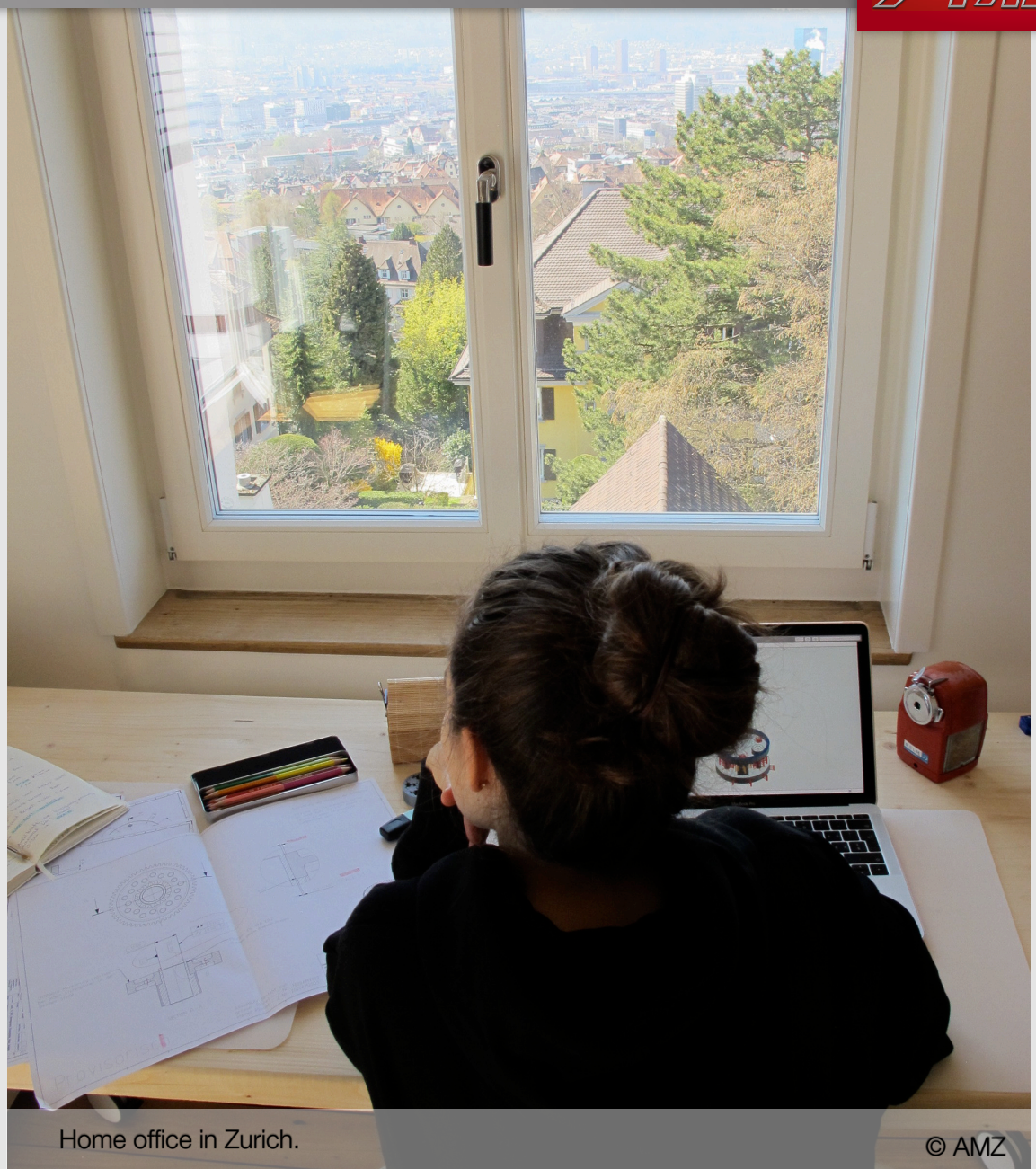
We are unable to host our rollout in May, as we did in years past. We are striving to find a later date where we can present alvier to you in person.

Furthermore, we are planning a virtual rollout, where we will introduce our car via live stream.

This adversity will not prevent us from finishing alvier, as soon as the circumstances allow it. Afterwards the commissioning of the car and testing season will follow as planned, in order to fine tune alvier for peak performance.

### Acknowledgment and things to come

We would like to seize this opportunity to express our appreciation of the continued support of our sponsors. During these difficult times we are fortunate to keep our ultimate goal of building a one of a kind race car in sight and you make this possible. We apologize that we cannot give more detailed information regarding the general outlook. We will announce updates in the course of the following weeks. We wish you, your family and your colleagues health and perseverance.



Home office in Zurich.

© AMZ

### Main Sponsors



### Premium Sponsors



### Sponsors



### Favourers

3M Schweiz  
BERNINA  
Compona  
formbar  
HABA  
Kistler Automotive GmbH  
NOVAGEARAG  
SATW  
Verwo

Admec AG  
Bomatec  
Domsel AG  
Fritz Born AG  
hasler ag  
Kubo Tech AG  
Oerlikon Group  
SKF  
ZF

Akkushop-Schweiz  
Bossard  
ebm-papst  
FURKAReibbeläge AG  
H.A. Schlatter Fonds  
MAN  
P Mec Sagl  
Stäubli Electrical Connectors

ANB Boumi  
Büchler Reinli + Spitzli AG  
EDAGEngineering GmbH  
Garage Stucki AG  
HS Composite  
Melasta  
Rheinmetall Air Defence AG  
Sturmberg GmbH

Ausbildungsverbund AarauWest  
Burkart & Pfaffen Dekorations-  
Enclustra GmbH  
Generelli SA  
Högg Produktionstechnik  
Metall Service Menziken AG  
Rigi-Kühler AG  
Styro 3D GmbH

Bach Heiden  
Brander Präzisionsmechanik  
Expressdruckerei GmbH  
Goodfellow Ceramics  
Jürg Huggler AG  
Mitutoyo  
Rofam GmbH  
Swiss-Composite AG

BAUMANNSprings Ltd.  
Brunner Präzisionsrund-  
Facom  
Glatt-Lack AG  
Influx Technology  
Müri PROTOTECHAG  
RoVtec  
Tecnopinz

Berner Fachhochschule  
Cimform AG  
Falegnameria F.lli Bugada  
H.A. Schlatter AG Fonds  
A. Jäggi AG  
MTA-Mechatronic  
Schaeffler  
Venturi